

GRAINFATHER CONICAL FERMENTER PRO CONTROLLER

INSTRUCTIONS FOR INSTALLING

So, you're ready to go wireless and upgrade your Conical Fermenter! The following instructions show you how to remove your existing controller and assemble your new Conical Fermenter Pro Controller.

PRODUCT CONTENTS

1. Controller
2. 4 x Screw hole plugs
3. Self-fusing tape
4. Fermenter socket cap

COMPATIBILITY

This product is only compatible with the Grainfather Conical Fermenter. After installing the new controller, you will still be able to use your fermenter with the Grainfather Glycol Chiller and Cooling Pump Kit.

ASSEMBLY

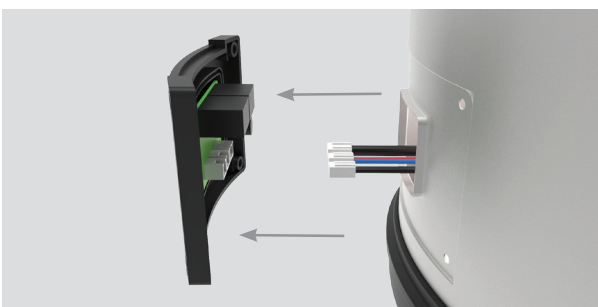
Before assembling this product, you will need a Phillips head screwdriver. For safety reasons, also ensure that your Conical Fermenter is unplugged prior to assembly.

REMOVE THE CURRENT CONTROLLER

1. Remove the current controller and the four screws securing the controller mounting bracket on the Conical Fermenter. Put them aside for now.

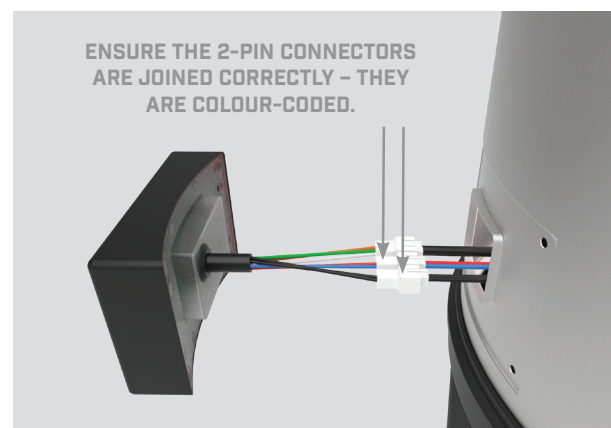


2. Carefully disconnect the three white-coloured, electrical connectors on the rear side of the controller mounting bracket. Once disconnected, you can disregard the bracket as it's no longer required with the new controller.

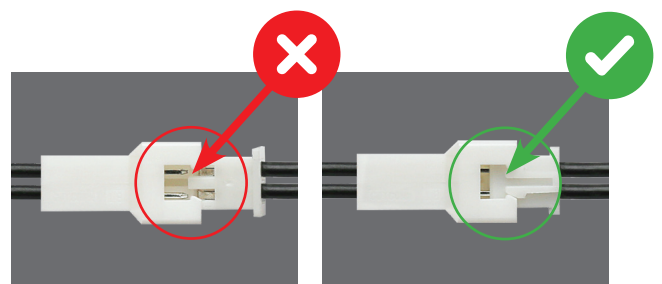


CONNECT THE NEW CONTROLLER

3. Take the new controller and join the three electrical connectors to the corresponding connectors on the fermenter. On both the controller and the fermenter, there is one larger connector with 3 pins and two smaller connectors with 2 pins.



ENSURE CORRECT ORIENTATION OF THE CONNECTORS AS PER THE DIAGRAM BELOW.



4. Check that all connections have been assembled correctly and that the controller switches on. At this stage, you can either connect the Conical Fermenter Pro to the Glycol Chiller via the M12 fermenter power cord and ensure that the chiller is turned on. Alternatively, if you aren't using a Glycol Chiller, you can connect the fermenter directly to a power socket. The controller screen should now turn on. If the controller does not turn on or an error message is displayed, please check that all connections have been assembled correctly.

DO NOT PROCEED TO STEP 5 AND APPLY THE SELF-FUSING TAPE UNTIL THE CONTROLLER AND FERMENTER HAVE BEEN CORRECTLY CONNECTED.

APPLY THE SELF-FUSING TAPE

5. The self-fusing tape protects the 3 sets of connectors against condensation. It provides superior protection than standard electrical tape. To apply, please follow the steps below:
 - A. Before applying, ensure that your hands are clean and that there is no dirt or oil on or near the connectors.
 - B. Cut a strip of roughly 25 cm (10") length of tape.
 - C. Peel 5 cm (2") of liner from the strip of tape.
 - D. Press the exposed tape firmly onto one of the 3 sets of wires a few centimetres away from the connection. Make sure you completely overlap the first wrap over itself while at the same time stretching the tape.
 - E. Continue to wrap the tape around the wires and connectors, peeling off the liner as you go. Ensure that the tape is always stretched as it is wrapped and that each layer partially overlaps the previous wrap. This tape works by self-adhering when it is stretched.
 - F. Once you have wrapped over a few centimetres of the wires on the other end of the connection, finish by completely overlapping the last wrap and press the tape firmly.
 - G. Cut off any remaining loose tape. Your finished connection should look like the image below.
 - H. Repeat these steps for each of the remaining 2 connections.



SECURE THE NEW CONTROLLER

6. Align and position the controller onto the fermenter body. Then secure in place using the 4 screws removed in step 1.

HAND-TIGHTEN ONLY. OVERTIGHTENING THE SCREWS MAY DAMAGE THE THREAD.



7. Insert the 4 screw hole plugs into position. The smaller end of the plug goes into the controller first until the plug surface is flush with the controller.



8. Attach the fermenter socket cap onto the back of the fermenter by stretching the fixing band loop onto the socket as shown.



Assembly is now finished. Please see the Grainfather Conical Fermenter Pro instructions for more information on how to set up wireless control with the Conical Fermenter Pro Controller. Also discover how to connect it to the Grainfather Community App: grainfather.com/instructions/

IMPORTANT ADVICE FOR CLEANING

- Always unplug your fermenter and screw on the fermenter socket cap prior to cleaning.
- The Conical Fermenter Pro Controller is splash proof to make cleaning the outside of your fermenter easy.
- Do not use a high-pressure hose directly on the controller or the fermenter power socket.
- Avoid the controller and power socket (even with the cap securely in place) coming into contact with water for extended periods of time.

IMPORTANT SAFEGUARDS: READ AND FOLLOW ALL INSTRUCTIONS

- CAUTION** - Risk of fires and electric shock.
- Replace only with genuine Grainfather cord set.
 - Do not immerse in water.

SAVE ALL WARNINGS AND INSTRUCTIONS FOR FUTURE REFERENCE FOR COMMERCIAL AND INDOOR USE ONLY



Download the FREE
Grainfather App



WARNING
AVERTISSEMENT

RISK OF ELECTRIC SHOCK . DO NOT OPEN.
RISQUE DE CHOC ÉLECTRIQUE. NE PAS OUVRIR



This device complies with Industry Canada license-exempt RSS standard(s) and FCC part 15. Operation is subject to the following two conditions: (1) this device may not cause interference, and (2) this device must accept any interference, including interference that may cause undesired operation of the device.

Le présent appareil est conforme aux CNR d'Industrie Canada applicables aux appareils radio exempts de licence ainsi qu'à la section 15 du règlement FCC. L'exploitation est autorisée aux deux conditions suivantes : (1) l'appareil ne doit pas produire de brouillage, et (2) l'utilisateur de l'appareil doit accepter tout brouillage radioélectrique subi, même si le brouillage est susceptible d'en compromettre le fonctionnement.

